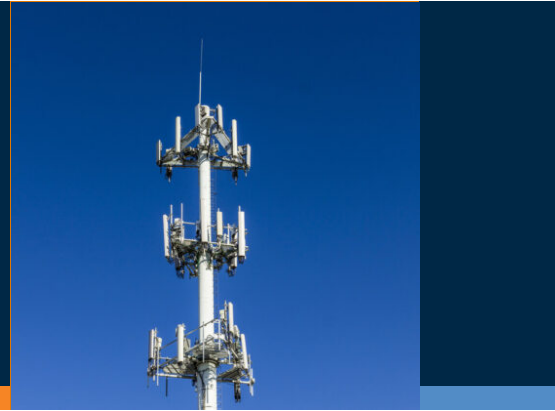


RIW Client TowerCo Secures Permit to Construct Wireless Telecommunications Facility

By RIW on October 29, 2025



Congratulations to RIW clients TowerCo and Verizon on successfully obtaining a Special Permit to construct a 150-foot monopole telecommunications facility in Sanbornton, NH. **TowerCo** is one of the largest privately held wireless infrastructure companies in the US, specializing in developing, acquiring, owning, and managing wireless communication towers and assets. With over 25 years of industry expertise and 15,000 tower, land, and rooftop assets nationwide, TowerCo is a recognized leader in the industry.

Michael Rosen led the representation for this transaction. RIW's Land Use team partners with property developers in the acquisition, permitting, and approvals for complex real estate projects, including wireless carriers seeking to expand their networks under the Federal Telecommunications Act. [Learn more about our scope and services here.](#)

POSTED IN: [NEWS](#), [ZONING & LAND USE](#)

PROFESSIONALS

[Michael Dana Rosen](#)

PRACTICES

[Zoning & Land Use](#)